

5-Year Trend in the number of FTE employed as Full-time vs. Part-time faculty and SCH's taught by them

AY		FT	%	PT	%	Extensions	%	Unknown	%	Total
2000-01	FTE	48	65.79%	23.125	31.70%	0.5	0.69%	1.333	1.83%	72.96
	SCH	15846	64.65%	8104	33.06%	153	0.62%	411	1.68%	24514
2005-06	FTE	67.04	67.45%	31.46	31.65%	0.63	0.63%	0.26	0.26%	99.39
	SCH	23848	61.51%	14583	37.63%	252	0.65%	72	0.19%	38755
Change in 5 Years	FTE	19.04	1.66%	8.34	0.05%	0.13	-0.06%	-1.07	-1.57%	26.43
	%	39.67%		36.06%		26%		-80.27%		36.23%
	SCH	8002	3.14%	6479	4.57%	99	0.03%	-339	-1.49%	14241
	%	50.50%		79.95%		64.71%		-82.48%		58.09%

Methodology: In order to compare the number of FTE's employed as the Full-time and the Part-time faculty, the credit hours for all the courses and sections taught by each faculty member were converted to full-time equivalent of 24 credit hours. The faculty was placed under 4 categories- FT, PT, Extension and Unknowns. Based on the interest in evaluation of quality depending on Full-time or Part-time status, the full-time group included Full-time faculty, Emeriti faculty, Main campus faculty teaching a course for the branch and the full-time staff that have routine responsibilities for teaching. 'Extension' included the faculty who taught 'C' or 'D' coded courses that represent RCC-UG and RCC-Graduate courses respectively. 'Unknown' comprised of Graduate Assistants or the faculty members whose FT/PT status at the time of analysis was unknown.

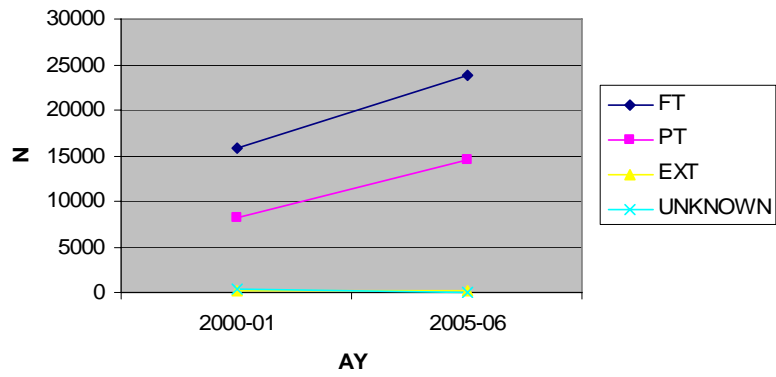
Conclusion: Although the number of FT- FTE's and PT -FTE's have increased by 39.67% and 36.06% respectively over the period of last 5 years, their relative percentage to the total faculty has increased by only 1.66% for FT and only by 0.24% for PT.

There is a 50.5% increase in the number of SCH's taught by the FT faculty (by FTE) in last 5 years and a 79.95% increase in the SCH's taught by the PT faculty (by FTE). While the student credit hour contact by these groups appears to have different levels of growth the relative percentage to the total are very similar at 3.14% and 4.57% respectively.

The third group 'Extension' faculty (by FTE) has decreased by 0.06% in last 5 years but the share of SCH's taught by them has increased by 0.03%. The fact that we were able to get the FT/PT status of most of the faculty members in the AY 2005-2006, lead to the decrease of 1.57% in 'Unknown' faculty (by FTE) group in 5 years and a drop in the SCH's taught by this group by 1.49%.

Although the total number of faculty FTE's increased by 36.23% in 5 years and the SCH's taught rose by 58.09%, these differences are most likely due to classes being enrolled closer to their capacity as enrollment caps per class have not been significantly altered among these years.

SCH's taught by Faculty at Firelands



FTE employed at Firelands

