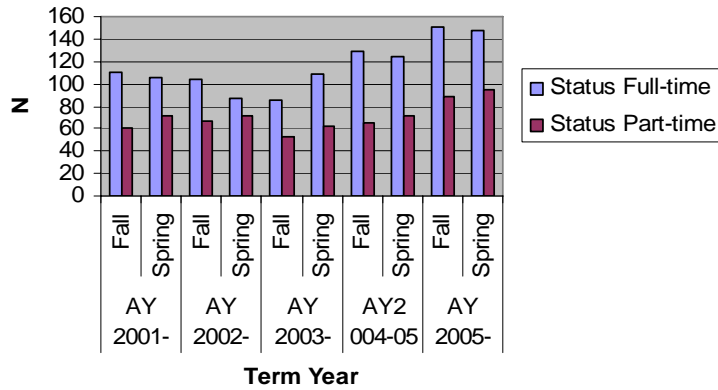


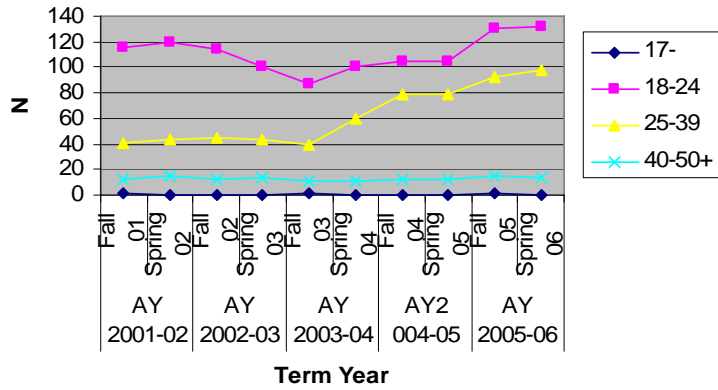
## Enrollment in Associates of Science

		AY 2001-02		AY 2002-03		AY 2003-04		AY2004-05		AY 2005-06		
Number Enrolled		Fall 01	Spring 02	Fall 02	Spring 03	Fall 03	Spring 04	Fall 04	Spring 05	Fall 05	Spring 06	
	<b>Total</b>	171	177	171	158	139	171	195	196	239	243	
<b>Gender</b>	Female	110	119	114	113	99	131	152	160	185	196	
	Male	61	58	57	45	40	40	43	36	54	47	
<b>Status</b>	Full-time	111	106	104	87	86	109	129	124	150	148	
	Part-time	60	71	67	71	53	62	66	72	89	95	
<b>Total SCH</b>		<b>1875</b>	<b>1872</b>	<b>1865</b>	<b>1644</b>	<b>1506</b>	<b>1897</b>	<b>2117</b>	<b>2089</b>	<b>2525</b>	<b>2573</b>	
<b>Race</b>	Black (B)	9	14	12	9	7	10	11	14	21	25	
	Hispanic (H)	0	0	1	2	0	1	1	0	0	0	
	White (W)	145	143	135	133	119	144	169	168	199	195	
	Hispanic Latino	7	7	7	4	7	8	5	4	9	10	
	Hispanic Mexican	0	0	0	0	0	0	1	1	1	0	
	American Indian	0	0	2	1	1	1	1	1	2	4	
	Asian/Pacific Islander	1	1	3	1	2	2	1	2	2	2	
	Others	0	0	0	0	0	0	0	0	0	0	
	Unknown (U)	9	12	11	8	3	5	6	6	5	7	
<b>Age</b> Traditionals 18-24	17-	2	0	0	0	1	0	0	0	2	0	
	18	41	21	25	14	12	16	23	12	34	26	
	19	26	37	22	25	23	18	24	34	25	28	
	20	15	14	22	21	18	26	20	15	30	24	
	21	16	12	17	14	14	14	16	14	11	19	
	22	8	21	11	13	5	8	7	12	17	14	
	23	4	7	12	10	4	7	9	9	6	12	
	24	6	7	5	4	11	11	5	9	7	9	
<b>Nontraditionals</b> 25-39	25 - 29	19	23	22	22	22	27	40	39	48	48	
	30 - 34	12	10	14	12	11	22	28	29	27	32	
	35 - 39	10	10	9	10	7	11	11	11	17	18	
	40-50+	40 - 44	5	7	3	6	2	4	5	9	10	9
		45 - 49	6	7	7	6	7	5	5	3	4	4
		50 +	1	1	2	1	2	2	2	0	1	0

### Enrollment by FT/PT Status



### Enrollment by Age Groups



### Total SCH

