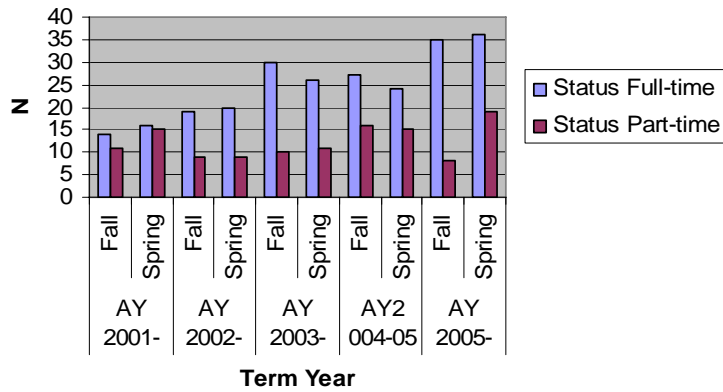


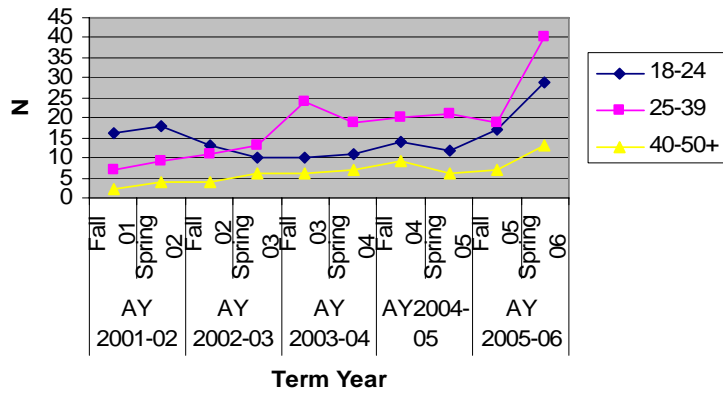
Enrollments in AAS in Respiratory Care Technology

Number Enrolled		AY 2001-02		AY 2002-03		AY 2003-04		AY 2004-05		AY 2005-06	
		Fall 01	Spring 02	Fall 02	Spring 03	Fall 03	Spring 04	Fall 04	Spring 05	Fall 05	Spring 06
	AAS in RCT	25	31	28	29	40	37	43	39	28	36
	Pre-AAS in RCT	-	-	-	-	-	-	-	-	15	19
	Total	25	31	28	29	40	37	43	39	43	55
Gender	Female	24	31	26	27	36	32	38	35	34	44
	Male	1	0	2	2	4	5	5	4	9	11
Status	Full-time	14	16	19	20	30	26	27	24	35	36
	Part-time	11	15	9	9	10	11	16	15	8	19
Total SCH		303	337	322	354	483	457	489	451	523	608
Race	American Indian	0	0	0	0	0	0	0	0	0	0
	Asian/Pacific Islander	0	0	1	1	0	0	0	0	0	0
	Black	1	1	2	5	4	4	7	4	11	15
	Hispanic	0	0	0	0	0	0	0	0	0	0
	Hispanic Latino	0	0	0	0	1	1	1	2	3	5
	Hispanic Mexican	0	0	0	0	0	1	0	0	0	0
	Hispanic Puerto Rican	0	0	0	0	0	0	0	0	0	0
	Others	0	0	0	0	0	0	0	0	0	0
	Unknown	1	0	1	1	1	0	0	0	0	0
	White	23	30	24	22	34	31	35	33	68	47
Age Traditionals 18-24	17-	0	0	0	0	0	0	0	0	0	0
	18	2	2	0	0	1	1	2	2	2	4
	19	2	2	4	1	1	1	1	2	1	3
	20	2	3	4	3	1	1	2	0	6	6
	21	3	3	1	4	0	1	3	1	1	2
	22	1	1	1	1	3	3	2	4	2	6
	23	2	4	1	1	2	2	2	1	4	5
	24	4	3	2	0	2	2	2	2	1	3
Nontraditionals 25-39 40-50+	25 - 29	4	5	7	9	14	10	8	7	9	16
	30 - 34	1	3	2	2	7	6	6	7	5	12
	35 - 39	2	1	2	2	3	3	6	7	5	12
	40 - 44	1	3	2	2	3	4	6	4	5	9
	45 - 49	0	0	0	1	1	1	1	1	2	3
	50 +	1	1	2	3	2	2	2	1	0	1

Enrollment by FT/PT status



Enrollment by Age groups



Total SCH

