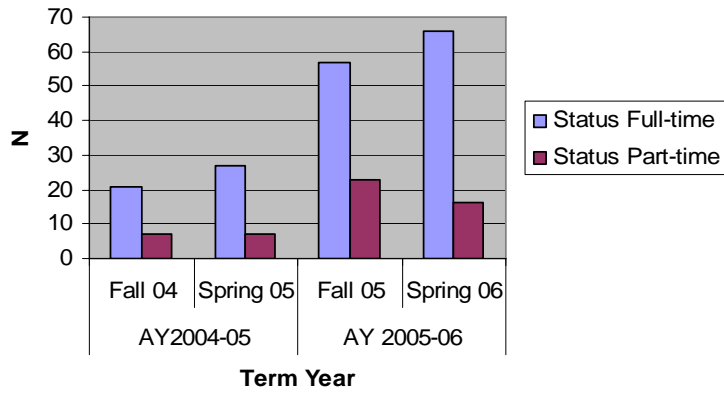


Enrollment in AAS in Radiologic Technology

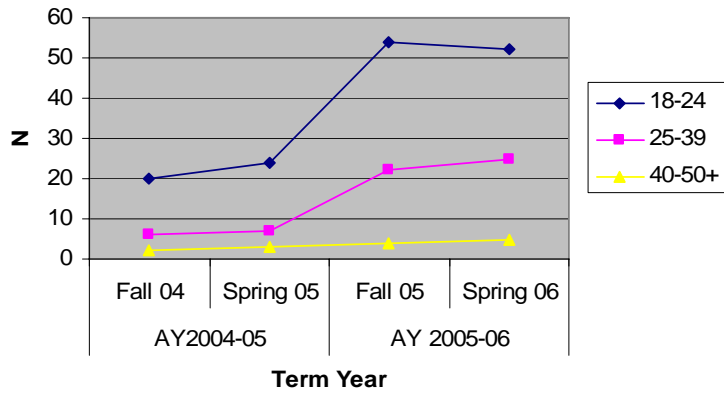
Number Enrolled		AY2004-05		AY 2005-06	
		Fall 04	Spring 05	Fall 05	Spring 06
	Pre-AAS in RADT	9	15	44	46
	AAS in RADT	19	19	36	36
	Total	28	34	80	82
Gender	Female	18	26	68	65
	Male	10	8	12	17
Status	Full-time	21	27	57	66
	Part-time	7	7	23	16
Total SCH		324	443	921	982
Race	American Indian	0	0	1	1
	Asian/Pacific Islander	0	0	0	1
	Black	0	1	1	1
	Hispanic	0	0	0	0
	Hispanic Latino	2	2	3	5
	Hispanic Mexican	0	0	0	0
	Hispanic Puerto Rican	0	0	0	0
	Unknown	1	1	3	2
	White	25	30	72	72
Age	Traditionals				
	17-	0	0	0	0
	18-24				
	18	18	4	11	3
	19	19	5	15	17
	20	20	5	13	11
	21	21	5	9	10
	22	22	0	3	9
23	23	1	0	1	
24	24	4	3	1	
Nontraditionals	25-39				
	25 - 29	4	4	12	16
	30 - 34	2	1	7	6
	35 - 39	0	2	3	3
	40-50+				
40 - 44	2	2	3	3	
45 - 49	0	0	1	2	
50 +	0	1	0	0	

* Prior to Fall 04, RADT was housed under ATS.

Enrollment by FT/PT status



Enrollment by Age groups



Total SCH

