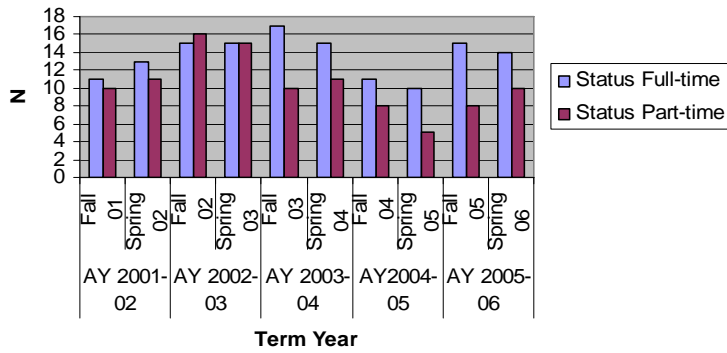


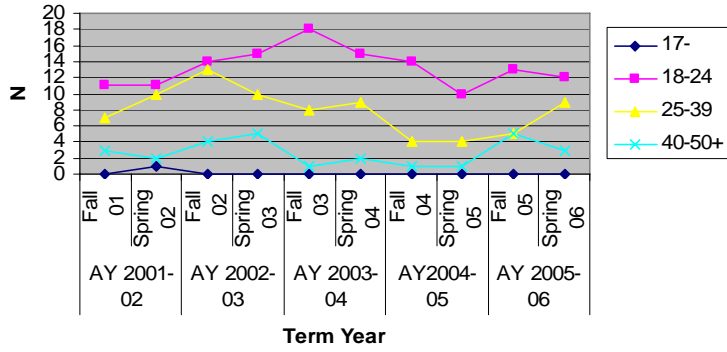
## Enrollment in AAS in Electrical – Electronic Engineering Technology

Number Enrolled		AY 2001-02		AY 2002-03		AY 2003-04		AY2004-05		AY 2005-06	
		Fall 01	Spring 02	Fall 02	Spring 03	Fall 03	Spring 04	Fall 04	Spring 05	Fall 05	Spring 06
	AAS in EEET	21	11	11	9	4	4	2	2	0	1
	Electromechanical Technology	-	-	-	-	-	-	1	1	10	11
	Electronics and Computer Technology	-	-	-	-	-	-	0	0	6	5
	Electrical Engineering Tech	-	4	10	9	13	15	11	8	5	6
	C& N Engineering Tech	-	9	10	12	10	7	5	4	2	1
	<b>Total</b>	<b>21</b>	<b>24</b>	<b>31</b>	<b>30</b>	<b>27</b>	<b>26</b>	<b>19</b>	<b>15</b>	<b>23</b>	<b>24</b>
Gender	Female	2	2	11	3	4	3	1	1	4	3
	Male	19	22	20	27	23	23	18	14	19	21
Status	Full-time	11	13	15	15	17	15	11	10	15	14
	Part-time	10	11	16	15	10	11	8	5	8	10
<b>Total SCH</b>		<b>223</b>	<b>261</b>	<b>331</b>	<b>303</b>	<b>300</b>	<b>271</b>	<b>195</b>	<b>155</b>	<b>261</b>	<b>254</b>
Race	American Indian	0	0	0	0	0	0	0	0	0	0
	Asian/Pacific Islander	0	0	0	0	0	0	0	0	0	0
	Black	3	3	4	2	1	5	1	1	2	1
	Hispanic	0	0	0	0	0	0	0	0	0	0
	Hispanic Latino	0	1	0	0	0	0	0	0	0	0
	Hispanic Mexican	0	0	0	0	0	0	0	0	0	0
	Hispanic Puerto Rican	0	0	0	0	0	0	0	0	0	0
	Others	0	0	0	0	0	0	0	0	0	0
	Unknown	0	0	0	0	0	0	0	0	1	1
White	18	20	27	28	3	21	18	14	20	22	
Age Traditionals	17-	0	1	0	0	0	0	0	0	0	0
	18	1	2	2	2	5	0	4	0	1	1
	19	0	1	4	2	2	7	5	5	4	2
	20	1	3	1	2	4	2	0	2	5	4
	21	6	2	2	1	0	1	0	0	0	1
	22	2	1	3	3	2	2	1	1	0	2
	23	0	1	2	2	2	3	2	1	2	1
	24	1	1	0	3	3	0	2	1	1	1
Nontraditionals	25-29	3	4	6	4	4	6	1	2	3	7
	30-34	3	4	5	5	3	1	1	0	0	0
	35-39	1	2	2	1	1	2	2	2	2	2
	40-44	2	1	3	4	1	2	1	1	5	3
	45-49	0	0	0	0	0	0	0	0	0	0
	50+	1	1	1	1	0	0	0	0	0	0

**Enrollment by FT/PT Status**



**Enrollment by Age groups**



**Total SCH**

