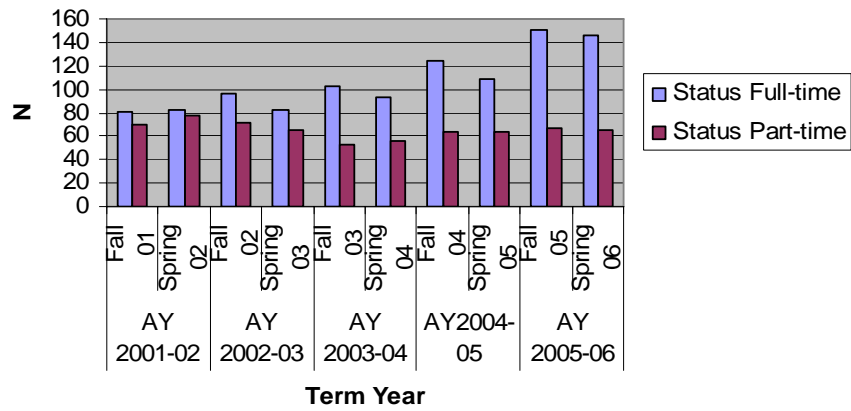


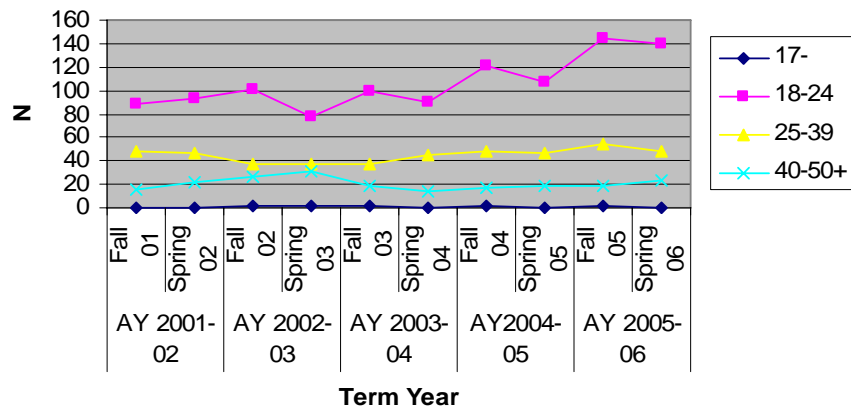
Enrollment In Associates Of Arts

		AY 2001-02		AY 2002-03		AY 2003-04		AY2004-05		AY 2005-06		
Number Enrolled		Fall 01	Spring 02	Fall 02	Spring 03	Fall 03	Spring 04	Fall 04	Spring 05	Fall 05	Spring 06	
	Total	151	160	167	148	156	149	188	172	217	211	
Gender	Female	94	102	104	83	96	88	113	102	129	117	
	Male	57	58	63	65	60	61	75	70	88	94	
Status	Full-time	81	83	96	82	103	93	124	109	150	146	
	Part-time	70	77	71	66	53	56	64	63	67	65	
Total SCH		1505	1570	1649	1478	1689	1613	2029	1817	2353	2343	
Race	Black (B)	10	13	9	5	8	8	13	8	11	15	
	Hispanic (H)	0	1	1	2	2	0	0	0	0	0	
	White (W)	136	141	147	129	136	133	163	156	194	182	
	Hispanic Latino	1	0	1	2	1	1	4	2	6	5	
	Hispanic Mexican	1	0	0	0	0	0	0	0	0	0	
	American Indian	1	1	1	1	0	0	0	0	0	1	
	Asian/Pacific Islander	0	1	2	2	1	1	1	1	0	1	
	Others				1	1	0	0	0	0	0	
	Unknown (U)	2	3	6	6	7	6	7	5	6	7	
Age Traditionals 18-24	17-	0	0	2	1	1	0	2	0	1	0	
	18	14	11	21	13	30	21	45	34	52	31	
	19	25	29	24	24	21	25	37	28	37	42	
	20	19	17	13	12	19	12	8	12	28	28	
	21	11	12	9	7	5	8	7	8	11	19	
	22	11	11	14	8	11	6	7	10	1	5	
	23	6	10	12	7	5	6	9	9	6	6	
	24	2	3	8	7	8	12	8	6	9	9	
Nontraditionals 25-39	25 - 29	21	22	23	20	22	22	28	29	30	28	
	30 - 34	16	16	12	15	12	16	13	9	14	13	
	35 - 39	11	8	3	3	4	7	7	9	10	7	
	40-50+	40 - 44	3	8	10	12	6	6	5	3	6	8
		45 - 49	6	5	8	7	6	4	6	8	6	5
		50 +	6	8	8	12	6	4	6	7	6	10

Enrollment by FT/PT status



Enrollment by Age groups



Total SCH

